

London Class Year 1 and 2

Topic title: The Arctic

Topic Themes: Space and Place

Our objectives for the topic:

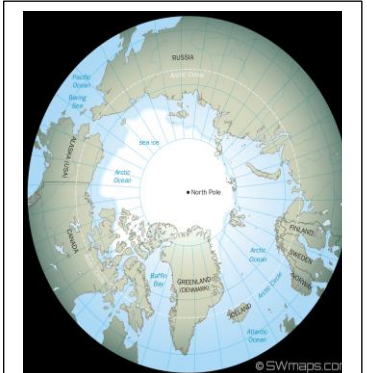
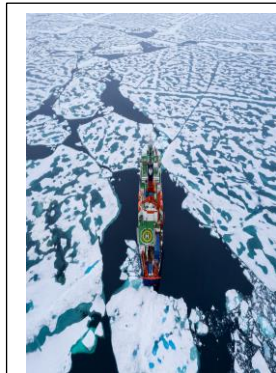
- To describe and compare weather patterns in the UK and the Arctic.
- To describe similarities and differences between East London and the Arctic.
- To name and locate the five oceans.
- To describe and understand key physical and human features.
- To produce a simple map with a key and compass directions.
- To locate the North and South Poles.
- To use aerial photos to recognise landmarks and human and physical features.

Essential Knowledge:

- The Arctic Circle is an invisible line that includes parts of the continents of North America, Northern Europe, Northern Asia.
- The Arctic is part of the Polar region and is the most northern part of the Earth.
- The Arctic region includes parts of nearby countries. These include Finland, Canada and Norway.
- The climate of the Arctic is very cold (+12 to -34 degrees) and very dry.
- In the winter it can get so cold that it is dangerous to go outside without special clothing and equipment.
- There are 2 seasons in the polar region (winter and summer)
- The Arctic is classed as a desert because it gets very little rain.
- There are five oceans: Pacific, Atlantic, Indian, Southern, Arctic
- The North Pole is the point at the very top of the earth. There is no land at the North Pole, just a layer of thick ice.
- There are communities of people who live in the Arctic.
- A compass helps you know which direction to travel.
- N = north, S = south, W = west, E = east.

Key Vocabulary:

- Arctic Circle**- An invisible line around the top section of the Earth. Everything North of this line is a part of the Arctic Circle.
- Ocean** -a large body of water that is further away from the land than a sea.
- Region**-an area of the world that doesn't always have fixed boundaries.
- Tundra**-a vast, flat, treeless Arctic region in which the ground is permanently frozen.
- Iceberg**-a large floating mass of ice.
- Desert**- an area of land that receives very little rain.
- Map**- a diagram of an area of sea or land.
- Globe**-a spherical model of the earth.
- Climate**-The weather conditions in a particular area.
- Aerial view**-a birds eye view of landscapes.
- Geographer**-an expert in the study of the physical features of the earth.



Interesting information:

Almost all the Arctic is covered by water and ice.

Narwhals are only found in the Arctic. They are known as sea unicorns because they have one tusk on the front of their heads.

Temperatures in the Arctic can be as low as -60 degrees centigrade.

