

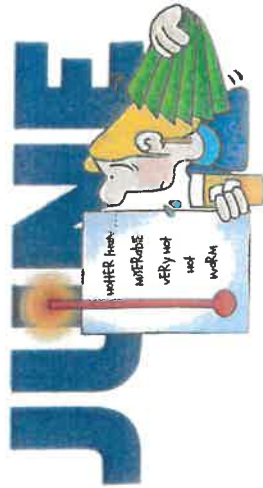
YEAR 5 AND 6 RESIDENTIAL VISIT TO MANOR ADVENTURE

During the last week of term most of the pupils from Eagles Class visited Manor Adventure, an outdoor education centre in Norfolk, for a five day visit. The centre is far away from Kent but it offers a range of activities that we cannot get in one centre here and with past experience we knew the children would have a fantastic time . . . and they did!

Manor Adventure is set on the Norfolk Lakes site in the village of Lyng and has a number of natural lakes where pupils were able to take part in a number of water sports. Activities such as canoeing, kayaking, raft building and giant stand up paddle-boarding took place over the first three days. The pupils, Mr Jones and Mrs Trenchard had a fantastic time learning how to manoeuvre themselves using whichever inflatable device they were assigned. There was a lot of falling in too but as always with water sports in the centres we choose, safety is paramount and full buoyancy aids were worn so everyone bobbed like corks! It's amazing how once one person falls in, everyone does!

The last two days were spent on a number of activities designed to challenge the children to explore their confidence and resilience. Pupils were able to use a fabulous huge climbing wall with challenges at various levels including overhangs that needed to be negotiated. There is an indoor caving and pot holing experience that brought great excitement and fun as the teams played strategy games in the tunnels. Archery, bivouac building, survival skills and camp fires took up the rest of the time and every child learned something new about themselves and each other in all activities. Who knew that Spencer was a natural at climbing, that Ava B and Evie Rose are natural leaders in a group or that Brooklyn's knowledge of survival skills is second to none?

The whole experience was brilliant and the children and staff returned to school absolutely exhausted at the end of the week. Our thanks go to Mr Jones for leading the trip, to Mrs Trenchard for full involvement and enthusiasm in everything all week, to our mini bus drivers - Mrs Erridge and Mr Barnes and our chaperones - Mrs Long, Mrs Barnes and Mr Hamilton. We could not have done this without your help.



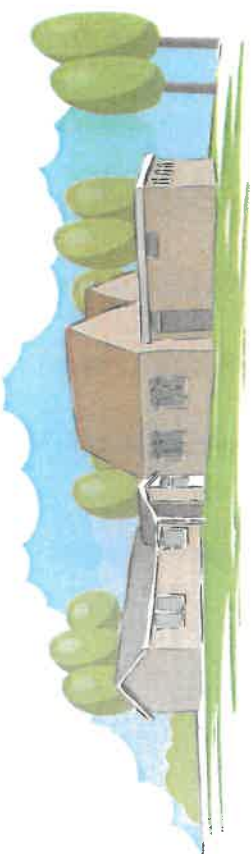
2021-2022

Langdon
Primary
School



Find us on Facebook: [Langdon Primary School/Langdon Primary School PTFA](#)

www.langdonprimaryschool.co.uk



PARENTAL HELP

As schools gradually open up their opportunities for pupils, we are beginning to re-engage with all of the activities that we offered prior to the pandemic. Classes are going on visits, including the residential visits you will have read about and the Year 3 and 4 Big Sing Festival this week. We are opening up to visitors for events like sports day, class assemblies, themed activities and our Jubilee Picnic and we are working on opening up our after school clubs with a view to starting this again in September. What we have been able to carry on with are our regular visits to Dover Leisure Centre for swimming lessons and gymnastics lessons.

From time to time, we have to ask parents to support us with chaperoning children to events outside of school. In the past, we have had almost too many parents offering help with weekly visits to the Leisure Centre or to one off events. Currently however, we are struggling to get support for almost everything and this means that I have had to use staff from other classrooms in order to ensure that we have enough adults for a visit outside of school. This is not ideal or a long term solution because it reduces the level of teaching and support we can provide to the class that loses an adult and it affects the range of activities that children can do when there is less support available.

The following events are planned for this term and we need your help to ensure that we have enough adult supervision. If you feel that you can help either with a regular weekly slot or even just a day if you cannot commit to this level of support for your child's class, then please let the class teachers know asap. This is a very busy term with lots of things planned in the diary; where other events are taking place I cannot easily release staff from other classrooms to help. So regrettably, if we cannot get enough adult help, the visit out of school will have to be cancelled. I would like to avoid this situation if at all possible, so if you can help it would be most appreciated.

Weekly Events

Tuesdays 1.00pm to 2.45pm - Year 2 Swimming at Dover Leisure Centre (wb.14.6.22-12.7.22)
Friday 1.00pm to 2.45pm - Hawks Class Gymnastics at Dover Leisure Centre (wb 10.6.22-15.7.22)

One-off Events

- 29.6.22 Dover Collaboration of Schools Year 6 Transition Day - Kent Approved Minibus Driver required for drop off and collection
- 30.6.22 Eagle Class Rehearsal at St Margaret's Village Hall - Kent Approved Minibus Driver required for drop off and collection
- 1.7.22 Eagle Class Rehearsal at St Margaret's Village Hall - Kent Approved Minibus Driver required for drop off and collection for drop off and collection
- 4.7.22 (am only) Eagle Class Rehearsal at St Margaret's Village Hall - Kent Approved Minibus Driver required for drop off and collection
- 5.7.22 (pm only) Eagle Class Rehearsal at St Margaret's Village Hall - Kent Approved Minibus Driver required for drop off and collection
- 7.7.22 Eagle Class Rehearsal at St Margaret's Village Hall AND Year 2 residential visit to Duke of York's Royal Military School - Kent Approved Minibus Driver required
- 14.7.22 Dover Collaboration of Schools Singing Festival at Duke of York's Royal Military School - 2x Kent Approved Minibus Driver required for drop off and collection

Dates to be Confirmed

- Parrot Class and Owl Class visit to Stone Bay - parent helpers and/or Kent Approved Minibus Driver required
- Hawks Class visit to Dover Town Centre and Kearsney Abbey - parent helpers and/or Kent Approved Minibus Driver required

PARKING IN THE VILLAGE

From time to time, the residents of the village come to see me to ask me to deal with the issue of parking in the village. I have had a number of residents contact me during the half term holiday and their concern centres on the RESIDENTS ONLY parking area at the top of Westside. This is a dedicated parking area for the residents of the street and MUST NOT be used by parents when they are dropping off or collecting children or most particularly, if they are visiting the school for any length of time. Parking in the marked disabled bay without a disabled parking Blue Badge is also an issue for residents who need this space. I have received pictures of the parking area fully packed with cars on the day of the Jubilee Picnic and whilst it is clear that not all belong to parents, most do and this really shouldn't happen. It creates a headache for the school staff and myself who have to deal with the complaints.

We have an agreement with the Parish Hall that this can be used for drop off and pick up and for longer events in school. It is only a couple of minutes walk from the hall to school and staff use this car park regularly without problems. Please use this space for parking first and foremost.



BOOK AND EQUIPMENT RETURN

As we approach the end of the academic year, could I ask all children and parents to have a big clean up at home of items that belong to school. Any books in particular, whiteboards that have been loaned or other equipment should now be returned to school. Our books have a Langdon Primary School stamp inside the front cover to make it easy to identify them.



Year 6 pupils should start to search for their high visibility jacket which will need returning to us the week beginning 11 July 2022, preferably washed prior to return.

If this can't be found, there is a £5.00 replacement charge. Jackets MUST be returned to the school office so that we can keep track of your return. Please do not take them to the classroom.

THE AMAZING ADVENTURES OF SUPERSTAN

Our end of year production this year is a rip-roaring run through the tale of SuperStan. Written by the same team who write many of our popular festival songs it proves to be a laugh (or groan) a minute with many jokes and lots of witty over acting! The production takes place on Thursday 7 July 2022 at 6.30pm at St Margaret's Village Hall. Tickets are available from the school office - £3.00 for adults and £1.00 for children; bring the whole family! There will also be a raffle so please bring along some loose change to try your luck.

It's great to see our youngsters performing, and to have a live audience to perform to, so we look forward to seeing you there and thank you in anticipation for your support.



HOW DO I HELP MY CHILD WITH READING?

This is a frequently asked question at parent's evenings and when meeting with teachers. After some thought, we have come up with questions that will help you when you are faced with reading with your child at home. Ideally, every child in every class (from Year R to Year 6) would read aloud with an adult every day but we know that this is hard going for most families, so if you can manage to read four or five times a week, this is great and it does really help your child progress. As a very simple example of how we know this, in Year 1 children are currently doing the Year 1 Phonics Check; we notice that the majority of children who read widely and often with adults are always able to manage to get higher results on this word reading task, than those who don't.

But what is reading with your child, what does it look like?

Start by choosing the book you will read. We send home a selected reading book, for younger children this is selected by staff and has a limited vocabulary that links to the phonics and words that your child has learned in class; but remember this isn't the only book that your child should read or will want to read.

Look at the front cover and the back blurb and work out or remind yourselves what it is about.

Recap what happened last time you read the book if it is a one that you will read over several sessions. Remind yourselves of the characters and plot.

Predict what you think might happen during this reading session.

Stop often to ask questions, to check understanding, to talk about new or unfamiliar words, to link the story to real life experiences and so on.

Take turns reading if your child seems disinterested. Parents reading to children helps develop an understanding of story structures and language, builds understanding of a wider and more mature vocabulary and helps children learn about intonation and expression when reading to an audience.

Read in a calm, quiet environment where you can share the enjoyment of the book or the story, even if you can only do this for a few minutes it's better than trying to read whilst falling asleep at the end of the day or dishing up the dinner.

Below are some questions that you can ask your child in order to help them with understanding the books and texts they read:

Understanding and retrieving information

Where did the story take place?
When did it happen?
Who were the main characters in the story?
What did they look like?
What happened at the beginning of the story/next?
What kinds of people are they?
Read the part that tells me ...
Where did ... go?
Which paragraph tells you ...
Which character ...
Describe ...
Find a word that tells you about the setting?
Which word tells you that ...

Deduce, infer, interpret

What makes you think that?
Explain the use of the word?
How did the character feel when ... how do you know?
Can you explain why ...?
Who is the story teller ... how do you know?
What was he thinking?
How are the two characters similar?
What words tell us that ...?
What is going to happen next?
What changed after ...?
How did the character change in the story?
What is your favourite part of the story?

Structure and organisation

Why is this part of the text in bold/italics/underlined?

Which words help organise the order of the text?

How does the writer build up to a conclusion?

What would be a good caption for this image?

Why are some sentences shorter than others?

How many paragraphs are on this page?

Why does the author use . . . ?

How does this paragraph link to the previous one?

Give two features that show it's a diary/letter/report, etc.

Why has the author used a table/arrows/boxes?

Writer's use of language

What did the writer intend when using these words?

Find some amazing adjectives.

Which phrase best describes . . . ?

Can you find any powerful verbs?

How does . . . help you understand?

Choose a word to describe the character and explain why you chose it.

Why is the description of . . . a good metaphor to use?

Why did the author choose this title?

How does the author make . . . appear frightening?

What does this word tell you about the character?

Why didn't the author just use the word . . . rather than putting all that description?

Writer's purpose and opinion

What was the text trying to do?

How does the author make you feel?

What does the author think about that?

Can you think of another story similar to this one?

What elements of the text are persuasive?

How does the author show the negative attitude towards . . . ?

Why did the author choose this setting?

What makes this a good story?

How did the author make this bit exciting/sad/scary?

Which illustrations are most useful for understanding . . . ?

What was the author telling you in this bit?

Context

Where is this story set and what made you think that?

In what ways is this story like . . . ?

How is this character similar to . . . ?

Do you know another story with the same message?

Have you ever been in this situation? What happened?

How would you feel if you were treated like this?

Which other stories start like this?

What does this story remind you of?

What might you have done?

What would this character think about . . . ?

Remember, the staff are always willing to help with any aspect of supporting your child with home learning. If you would like to ask them questions or see them work with your child so that you know how they do it in school to help you at home, then please ask - we are always happy to help.

JUBILEE PICNIC

Thank you to everyone who came to or helped with our picnic celebration for the Queen's Platinum Jubilee. It was wonderful to have so many families join us on the day for this informal gathering and I am told that the atmosphere was fantastic. We have some great photographic memories of the day that we will save for the end of Year 6 when we revisit them in our leaver's service!



COVID-19 VACCINATIONS FOR CHILDREN

I have been asked to remind parents that the Covid-19 vaccine is available for all children from 5 years old. To help carers, guardians and parents decide what is best for their children, the Department for Education will be partnering with the NHS in London and the National Network of Parent Carer Forums to answer questions and give expert advice on the COVID-19 vaccines for children and teenagers.

The webinar will take place on Friday 10 June from 1.30pm to 2.30pm and can be accessed via the following link:

[webinar](#)

ACHIEVEMENT ASSEMBLY

Each week we hold an achievement assembly when we celebrate successes throughout the school and from home. We would once again, like to invite parents to join us in our assemblies starting from Friday 10 June 2022. Parents are welcome to come to the school hall from 8.30am, our assembly starts at 9.00am and usually lasts for about 20 minutes. This week, however, we have a Bewl Water Residential Visit video presentation at the end of the assembly which will last about 15 minutes. Parents are welcome to stay and see what the children in Year 3 and 4 got up to on their visit.

SPORTS DAY

This is usually the signal for torrential rain to start! Weather permitting, we will be holding our Sports Day on Friday 17 June 2022 here, in the school grounds. During the morning the children will take part in a 'potted sports' session in their house groups. The scores from these events will be added up and totalled with the scores from the afternoon's events which will take the form of a traditional sports day. Parents and visitors are welcome to join us for the afternoon which will start at 1.30pm, bring a picnic blanket and/or deckchair and a pair of trainers if you are going to take part in the parent's race. Should the weather be poor on Friday we will cancel the day and reschedule for Monday 20 June 2022 at the same time. Children will need full PE kit in school every day between now and Sports Day in preparation for practices we will have in the run up to the event itself.



SCHOOL DINNER PAYMENTS

I know that I keep on giving this reminder to parents but I really do need you to take note now (cue the big, shouty text!):

SCHOOL DINNERS MUST BE PAID FOR IN ADVANCE OF THE DINNER BEING TAKEN

Every week late payments from a small minority of parents is causing an enormous amount of work as we try to rectify the online systems to manage this and this is time and stress in school that we can ill afford. Please help both the dinner staff and our office staff who have to manage this, and me, by paying in advance.

SUMMER THOUGHTS

Please make sure that your child has a named water bottle (filled with water only please) and named hat in school now that we are in the summer term. We operate a 'no hat, no outdoor play' policy on hot days and it's always disappointing for children when they have to stay inside.

On hot, sunny days please apply sunscreen to your child before coming to school. If you would like them to apply sunscreen during the day please send in a named bottle and we will supervise them with this.

DATES FOR THE DIARY

| Date | Event | Time |
|---------|--|--|
| 7.6.22 | Beginning of Term 6 | |
| 8.6.22 | Year 3/4 The Big Sing Festival at Charlton Church | 1.00pm-2.30pm |
| 9.6.22 | Kent NHS Year 6 Well Being Questionnaire Owl Class Assembly | 2.40pm |
| 10.6.22 | Dover Girls Grammar School - Year 6/7 Liaison visit at Langdon | 1.00pm |
| 13.6.22 | Beginning of Sports and PE Week St Edmunds' RC School - Year 6/7 Liaison visit at Langdon with Mrs Best | 1.00pm |
| 14.6.22 | Dynamic Sports Day - activities for all classes with Dynamic Sports Dover Boys Grammar School - Year 6/7 Liaison visit at Langdon with Ms Robinson | 10.00am |
| 15.6.22 | Scooter (KS1) and Skateboard (KS2) Workshops | |
| 16.6.22 | Sir Roger Manwood's Grammar School - Year 6/7 Liaison visit at Langdon with Miss Deveson | 1.00pm |
| 17.6.22 | Sports Day - parents are welcome to join us from 1.15pm. Please bring your own picnic blanket or deckchair. | 1.30pm-3.00pm |
| 20.6.22 | Reserve Sports Day (in case of rain) | 1.30pm-3.00pm |
| 22.6.21 | Transition Session 1 - new entrants in school | 1.45pm-3.00pm |
| 23.6.22 | Hawks Class Assembly | 2.30pm |
| 29.6.22 | Dover Collaboration of Schools Year 6 Transition Day Transition Session 2 - new entrants in school | 9.00am-3.00pm 1.45pm-2.45pm |
| 30.6.22 | Eagles Class End of Year Production Rehearsal at St Margaret's Village Hall | 9.00am-3.00pm |
| 1.7.22 | Eagles Class End of Year Production Rehearsal at St Margaret's Village Hall Goodwin Academy - Year 6/7 Liaison visit at Langdon with Miss Lowther | 9.00am-3.00pm 1.00pm |
| 4.7.22 | Eagles Class End of Year Production Dress Rehearsal at St Margaret's Village Hall | 9.00am-12.00pm |
| 5.7.22 | Eagles Class End of Year Production Rehearsal at St Margaret's Village Hall | 1.00pm-TBC |
| 6.7.22 | Transition Session 3 - new entrants in school | 1.45pm-2.45pm |
| 7.7.22 | Eagles Class End of Year Production Rehearsal at St Margaret's Village Hall Year 2 Residential visit at Duke of York's Royal Military School End of Year Production - The Amazing Adventures of SuperStan at St Margaret's Village Hall. Doors open at 6.00pm. | 9.00am-3.00pm 6.30pm |
| 11.7.22 | Parrot and Hawk Classes Pirate Day - dress up as a pirate | |
| 13.7.22 | Transition Session 3 - new entrants in school | 1.45pm-2.45pm |
| 14.7.22 | Dover Collaboration of Schools Music Festival for choir - parents welcome to attend from 1.15pm Parrot Class Assembly | 9.00am-2.30pm 2.40pm |
| 19.7.22 | Music Concert and o/c Open Afternoon | 1.30pm-5.00pm |
| 20.7.22 | End of Year Achievement Assembly Year 6 End of Year 6 Celebration with Reverend Kaz Key Stage 2 Silent Disco | 9.00am 1.00pm-3.00pm 5.30pm-7.00pm |
| 21.7.22 | 9.30am Leaver's Celebration End of Term | 9.30am 2.00pm |

www.langdonprimaryschool.co.uk



Langdon Primary School



Langdon Primary School PTFA

